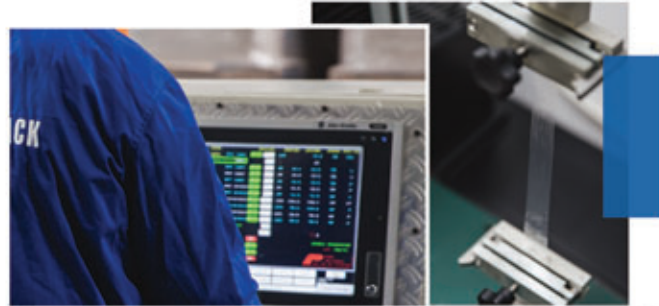


Clipsicopack focuses on the value that presents to our clients, It can merge long experience in packaging business with ExxonMobil PE technologies producing latest packaging solutions, cost effective, eco- friendly products at the same time committing with excellence quality and customer services. *Clipsicopack* has advanced R&D and quality control laboratories with all resources and equipments to guarantee continuous product improvements and therefore achieve maximum efficiency of the client's resources.



CP Guaranteed Quality..

CP has advanced R&D and Quality Control laboratories with all resources and equipments to guarantee continuous product improvements and therefore achieve a maximum efficiency of the client's Cost, Time and Productivity .



PP & PET STRAP

STRETCH WRAP



INDUSTRIAL STRAP

Packaging Solutions

STRETCH



Clipsicopack offers 7 layers LLDPE stretch film for wrapping pallets, appropriate for many applications including Power Stretch Wrap, Handgrade as well as Jumbo rolls for rewinding applications .

CP POWER & POWER PLUS+ grades are your premium choice

WHY?



- Maximizes overall load stability and containment with less film .
- Great puncture and tear resistance .
- Excellent performance consistency .
- High, reliable one-sided cling .
- Ideal film clarity for product scanning .
- Up to 400% pre-stretch capability .



PP STRAPS

For more than 35 years,

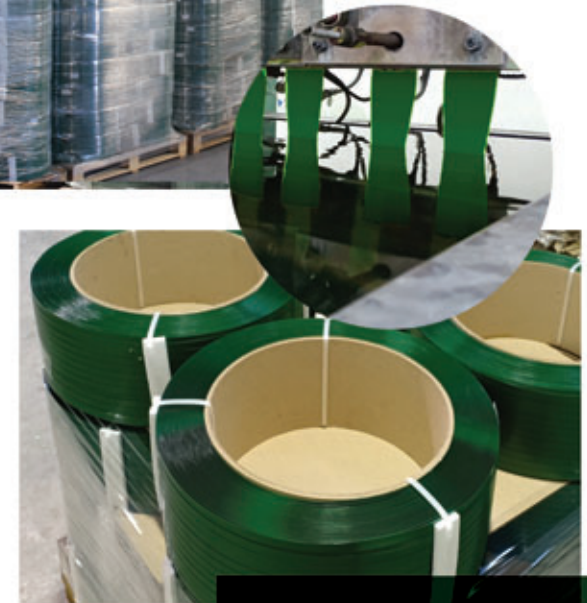
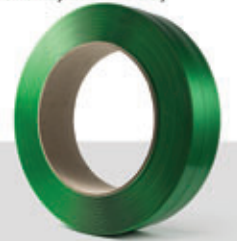
Clipsicopack produces PP Strapping bands, starting with 100% recyclable PP straps for Manual, Semi-automatic and Full Automatic, Using High Italian Tech. and Product lines, to have a wide portfolio of sizes colors, and Textures,. A limitless length of PP straps supplied to Farms, Fruit & Veggies packaging stations, Ceramics, Bricks, Synthetic Fiber, Home Appliances, Carton & Paper Industries, and Glass Production facilities



PET STRAPS

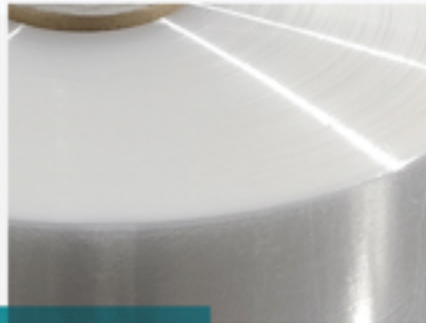
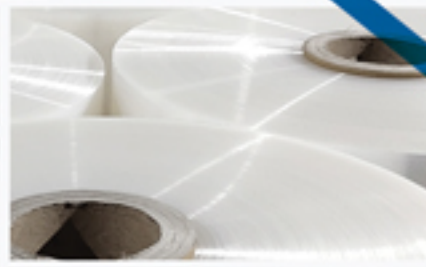
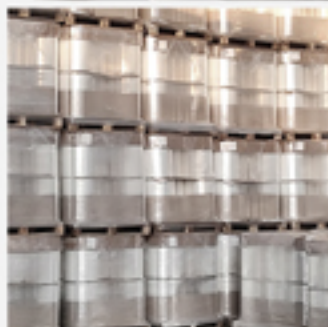
The newest among *Clipsicopack* facilities , which guarantee high strength resembling steel strap with the elasticity of plastic straps, lighter than its steel strap equivalent and resistant to moisture and corrosives.

Suitable for high tightening force application, high breaking strength, available in all colors, all sizes,





CLIPSICO PACK | Packaging Solutions



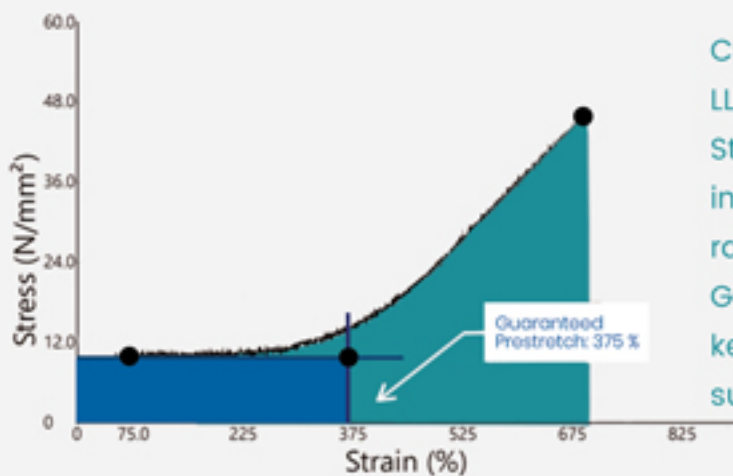
STRETCH FILM

CLIPSICOPACK offers Wide Range of HIGH PERFORMANCE STRETCH WRAP

	Automatic	Hand Grade
Roll Weight	10 to 50	1 to 5
Roll Width	350 / 500 / 1000	350/500
Inner Core Dia.	76.6	50
Inner Core weight	1 to 2	0.2 to 1

Physical Roll PROPERTIES

Roll Weight	Kg
Roll Width	mm
Inner Core Dia.	mm
Inner Core weight	kg



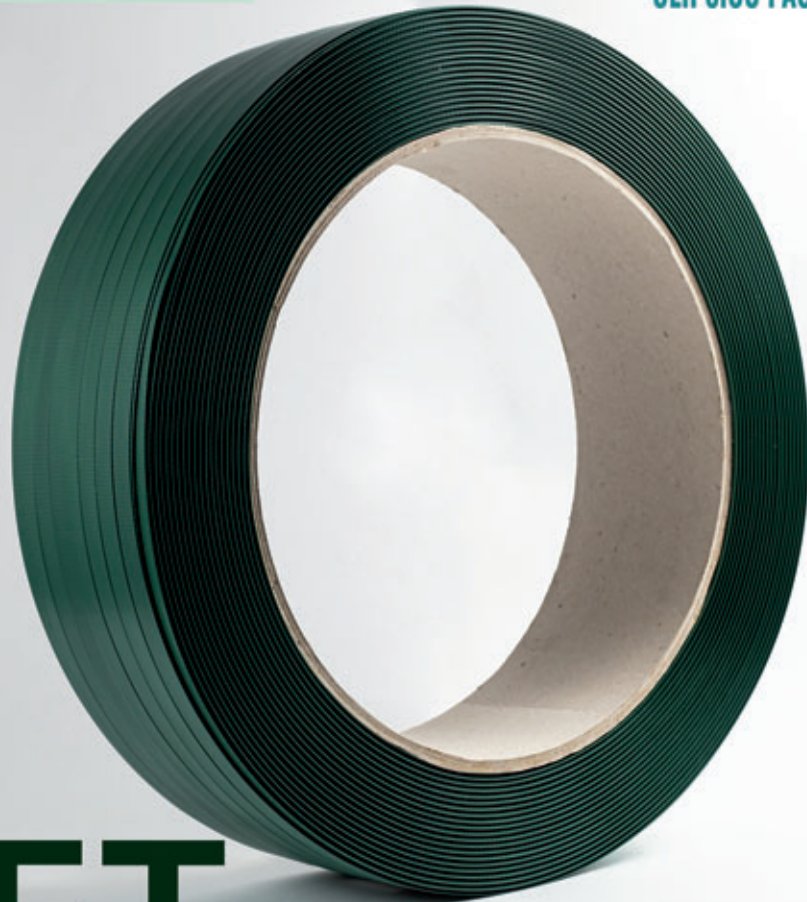
CP offers a wide range of 7 layers Technology LLDPE Stretch Film appropriate for Power , Standard and Handgrade use, Also available in Standard and Jumbo rolls. The Film Gauge ranges from 11mic up to 40mic with Guaranteed Stretchability up to 400% keeping the performance of the wrap at superior level.

Stretch Film Technical Specifications

Max Guaranteed Prestretch%	STANDARD		POWER		POWER PLUS+	
	Stretchability (%)	Puncture (N)	Stretchability (%)	Puncture (N)	Stretchability (%)	Puncture (N)
12 μm			200%	16	250%	18
15 μm			220%	17	270%	20
17 μm	180%	16	250%	18	300%	22
23 μm	180%	17	260%	20	330%	28
30 μm	180%	20	300%	26	375%	35

SAVING TABLE

	Nominal Weight	STANDARD		POWER		POWER PLUS+	
		g/meter		g/meter		g/meter	
12 μm	5.7			2.9		2.3	
15 μm	7			3.2		2.6	
17 μm	8	4.4		3.2		2.7	
23 μm	11	6.1		4.1		3.3	
30 μm	14	7.8		4.7		3.7	



PET STRAP

When you have to pack very heavy things, you should choose PET straps which is very strong and elastic at the same time, absorb shock during transportation, Clipsicopack present latest strapping solutions, PET straps that available in widths of 9 to 32 mm

Let us help you to identify perfect strapping solution as per your needs

CODE	Average m Weight	Width (mm)	Thickness (mm)	SURFACE	Breaking Strength		Milage Per Coil
					Kgf	N	
PET9060	6.1	9.00	0.60	Diamond Embossed	183	1,798	3500
PET9070	7.3	9.00	0.70		214	2,098	2800
PET12060	8.1	12.00	0.60		245	2,398	2400
PET12070	10.0	12.00	0.70		285	2,797	2000
PET12080	11.3	12.00	0.80		326	3,197	1800
PET15070	12.0	15.00	0.70		357	3,497	1700
PET15080	14.1	15.00	0.80		408	3,996	1400
PET150100	18.3	15.00	1.00		509	4,995	1000
PET15570	12.5	15.50	0.70		369	3,613	1600
PET15590	16.7	15.50	0.90		474	4,645	1200
PET 160100	19.3	16.00	1.00		543	5,328	1000
PET 19080	17.9	19.00	0.80		516	5,062	1100
PET 190100	23.2	19.00	1.00		645	6,327	850
PET 190130	30.3	19.00	1.30		839	8,225	650
PET 250100	30.5	25.00	1.00		849	8,325	650
PET 250120	37.4	25.00	1.20		1019	9,990	550
PET 32100	39.0	32.00	1.00		1087	10,656	500
PET 32120	47.9	32.00	1.20		1304	12,787	400

Optimal working range =

balanced relationship between elastic/plastic elongation and shock reserve

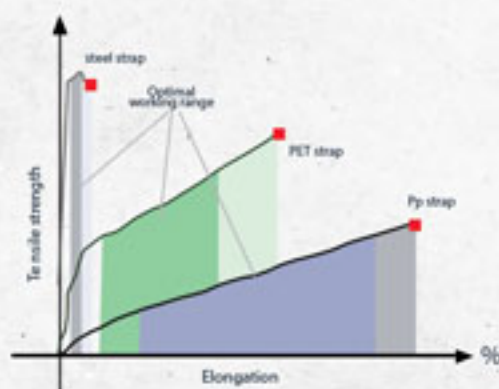
Elastic Elongation

Describes the maximum amount of strap elongation without any permanent change in length when the load is removed

Shock reserve

Shock reserve absorbs dynamic loads up to break

	Elongation at break	Elastic Elongation	Optimal working range
PET	approx. 11%	2-4 %	2-8 %
PP 1	4-20% 4	-5 %	4-16 %
Steel	3-5%	<1 %	0.5 -1 %





PP STRAP



To ensure your products packed and secured efficiently during the logistics procedures, *CLIPSICOPACK* presents full range of high quality PP strapping Bands produced with high tensile and mechanical properties.

You can explore it and find out your suitable product according to your requirements

CODE	Width (mm)	Thickness (mm)	Breaking Strength		Meter Weigh g/m	Milage Per Coil
			Kgf	N		
PP5047	5.00	0.50	68	670	1.4	7000
PP5055	5.00	0.55	75	737	1.7	6000
PP7050	7.00	0.50	101	998	2.2	4500
PP7060	7.00	0.60	121	1,197	2.6	4000
PP8055	8.00	0.55	127	1,254	2.8	3600
PP8060	8.00	0.60	139	1,368	3.0	3300
PP9055	9.00	0.55	140	1,379	3.1	3200
PP9060	9.00	0.60	152	1,505	3.4	3000
PP9070	9.00	0.70	178	1,756	4.0	2500
PPI2055	12.00	0.55	183	1,803	4.2	2400
PPI2055 L	12.00	0.55	183	1,803	4.2	2400
PPI2060	12.00	0.60	199	1,967	4.6	2400
PPI2060 L	12.00	0.60	199	1,967	4.6	2400
PPI2070	12.00	0.70	232	2,294	5.4	2000
PPI2080	12.00	0.80	266	2,622	6.1	1650
PPI2080 L	12.00	0.80	266	2,622	6.1	1650
PPI3070	13.00	0.73	270	2,663	5.7	1800
PP 15060	15.00	0.60	255	2,514	5.6	1800
PPI5065	15.00	0.65	272	2,686	6.3	1600
PPI5080	15.00	0.80	335	3,306	7.7	1300
PPI5090	15.00	0.90	377	3,719	8.7	1150
PPI6080	16.00	0.80	358	3,534	8.2	1200
PPI6090	16.00	0.90	403	3,976	9.3	1100

Roll Packaging / Palletizing

Internal Core Diameter	406	200
External Core Diameter	550	450
Roll width	180	190
Coils/Pallet	52	66
Box/Pallet	52	33
Pallet Dimensions	114X114X220	80X120X220



Strap (L)
Smooth
Edges for
minimized
level
of dust